

# WEATHERWELL ALUMINIUM SHUTTERS

EXTENSIVE OPTIONS. EXTENDED WARRANTY.  
ELEVATE YOUR EXPECTATIONS.



**ALL SHUTTERS & BLINDS**

[www.allshuttersandblinds.com.au](http://www.allshuttersandblinds.com.au)

1 300 722 074



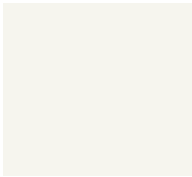
# Weatherwell

*Designed for Beauty. Built to Weather Life.*

- \*Custom made in a Western style overseas factory
- \*Soft lines mimic a traditional wood plantation shutter
- \*Available in 3 blade sizes and fixed blade
- \*Great for use in high traffic, internal and wet areas

## WEATHERWELL ALUMINIUM OPTIONS

### STANDARD COLOUR OPTIONS



White



Pearl



Silver



Black

### WOOD GRAIN FINISH



Golden Oak



Walnut

### AVAILABLE SECURITY FEATURES



Security Bolt



Flush Bolt



# Weatherwell

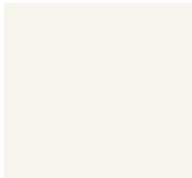
ELITE

*Engineered to Weather the Elements.*

- \*Custom made in the USA
- \*Clean, modern design with no visible screws or tilt rod
- \*Fix blades in place with the exclusive 'Blade Stay' feature
- \*Concealed mechanisms and powder coating give maximum outdoor durability
- \*Designed for commercial and residential use

## WEATHERWELL ELITE ALUMINIUM OPTIONS

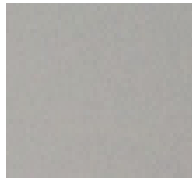
### STANDARD COLOUR OPTIONS



White



Pearl



Clear-Coat Anodized



Black

### AVAILABLE SECURITY FEATURES



Double Shute Bolt Key

### WOOD GRAIN POWDERCOAT



Knotty Pine



Walnut Matte

### BLADE STAY



Comes Standard



Double Shute Bolt



ENCLOSE A PATIO



DECK TURNED OASIS



WIND PROTECTION



WET & HIGH USE AREAS

### ENCLOSE A BEACHSIDE DECK

Have a great outdoor space you want to use year round? The homeowners of this beachside home needed a unique way to enjoy their deck in the ever changing ocean climate. **Multi-fold** shutters enabled them to pull their shutters to the side on beautiful days or close them off quickly when the storms rolled in.

### CITY SLEEK WITH WIND PROTECTION

Weatherwell shutters' robust design gives them the strength to survive high winds while maintaining a sleek look. This downtown high-rise body corporate was looking for a way to protect furniture from winds. **Sliding** aluminium shutters met all their needs of security and still maintained the design continuity of the building.

### DECK TURNED PRIVATE OASIS

An outside deck that was never used due to close neighbours became an oasis when enclosed with **Fixed** aluminium shutters. Movable blades that can be set in any position gave the homeowners ultimate flexibility and solitude. No more prying eyes.

### WET & HIGH USE RESORT LIVING

Weatherwell aluminium shutters are perfect for extending the luxurious look of timber shutters into commercial and high-use areas. This beachside resort needed to ensure privacy for the hot tub enclosures around their property. **Hinged** shutters maintained the picturesque view and privacy while allowing airflow.

FREE MEASURE & QUOTE 1 300 722 074

WWW.ALLSHUTTERSANDBLINDS.COM.AU

ALL SHUTTERS & BLINDS