

WEATHERWELL ALUMINIUM SHUTTERS

EXTENSIVE OPTIONS. EXTENDED WARRANTY.
ELEVATE YOUR EXPECTATIONS.



ALL SHUTTERS & BLINDS

www.allshuttersandblinds.com.au

1 300 722 074



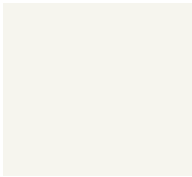
Weatherwell

Designed for Beauty. Built to Weather Life.

- *Custom made in a Western style overseas factory
- *Soft lines mimic a traditional wood plantation shutter
- *Available in 3 blade sizes and fixed blade
- *Great for use in high traffic, internal and wet areas

WEATHERWELL ALUMINIUM OPTIONS

STANDARD COLOUR OPTIONS



White



Pearl



Silver

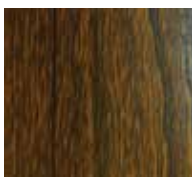


Black

WOOD GRAIN FINISH



Golden Oak



Walnut

AVAILABLE SECURITY FEATURES



Security Bolt



Flush Bolt



Weatherwell

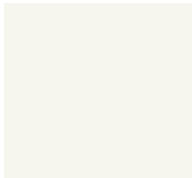
ELITE

Engineered to Weather the Elements.

- *Custom made in the USA
- *Clean, modern design with no visible screws or tilt rod
- *Fix blades in place with the exclusive 'Blade Stay' feature
- *Concealed mechanisms and powder coating give maximum outdoor durability
- *Designed for commercial and residential use

WEATHERWELL ELITE ALUMINIUM OPTIONS

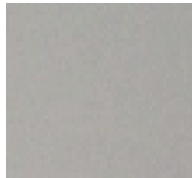
STANDARD COLOUR OPTIONS



White



Pearl



Clear-Coat Anodized



Black

AVAILABLE SECURITY FEATURES



Double Shute Bolt Key

WOOD GRAIN POWDERCOAT



Knotty Pine



Walnut Matte

BLADE STAY



Comes Standard



Double Shute Bolt



ENCLOSE A PATIO



DECK TURNED OASIS



WIND PROTECTION



WET & HIGH USE AREAS

ENCLOSE A BEACHSIDE DECK

Have a great outdoor space you want to use year round? The homeowners of this beachside home needed a unique way to enjoy their deck in the ever changing ocean climate. **Multi-fold** shutters enabled them to pull their shutters to the side on beautiful days or close them off quickly when the storms rolled in.

CITY SLEEK WITH WIND PROTECTION

Weatherwell shutters' robust design gives them the strength to survive high winds while maintaining a sleek look. This downtown high-rise body corporate was looking for a way to protect furniture from winds. **Sliding** aluminium shutters met all their needs of security and still maintained the design continuity of the building.

DECK TURNED PRIVATE OASIS

An outside deck that was never used due to close neighbours became an oasis when enclosed with **Fixed** aluminium shutters. Movable blades that can be set in any position gave the homeowners ultimate flexibility and solitude. No more prying eyes.

WET & HIGH USE RESORT LIVING

Weatherwell aluminium shutters are perfect for extending the luxurious look of timber shutters into commercial and high-use areas. This beachside resort needed to ensure privacy for the hot tub enclosures around their property. **Hinged** shutters maintained the picturesque view and privacy while allowing airflow.

FREE MEASURE & QUOTE 1 300 722 074

WWW.ALLSHUTTERSANDBLINDS.COM.AU

ALL SHUTTERS & BLINDS